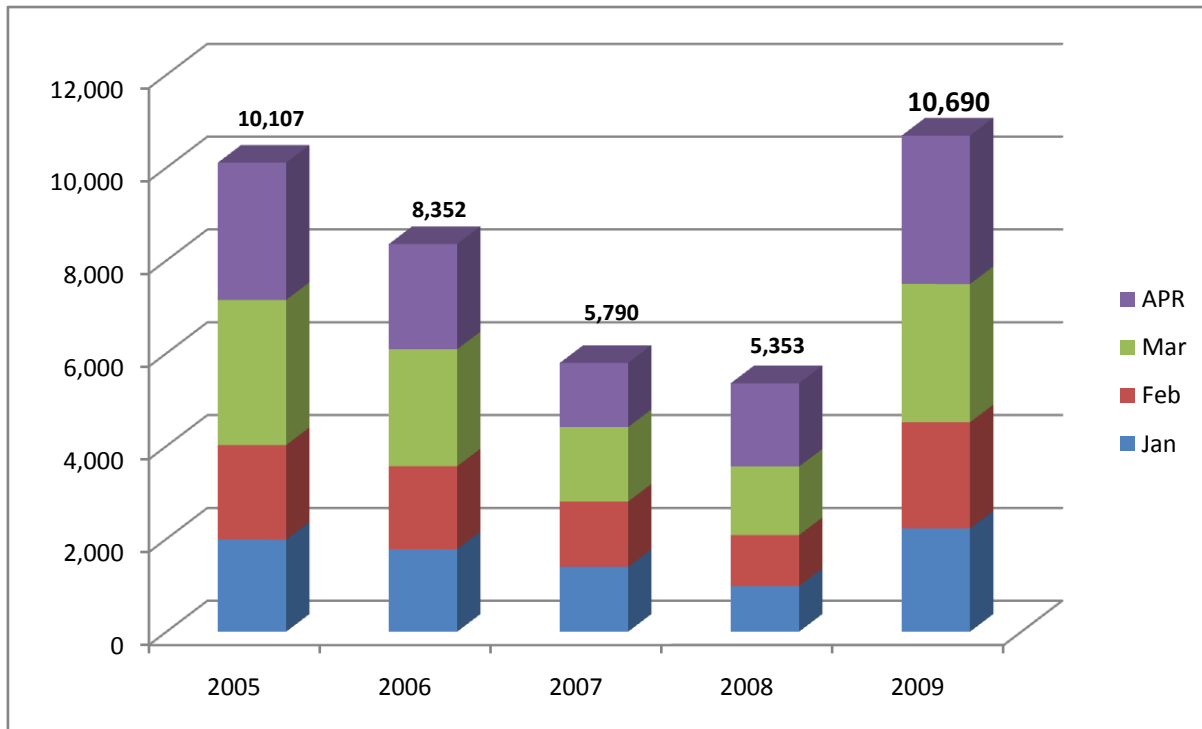


# 5 Year SFR Volume Comparison - Jan thru April

Source: GLVAR

Information from sources deemed reliable, but not guaranteed.

	Jan	Feb	Mar	APR	Totals
<b>2005</b>	1,985	2,038	3,127	2,957	10,107
<b>2006</b>	1,778	1,787	2,521	2,266	8,352
<b>2007</b>	1,397	1,407	1,605	1,381	5,790
<b>2008</b>	983	1,098	1,478	1,794	5,353
<b>2009</b>	2224	2288	2,980	3,198	10,690



With the reported April 2009 Sales Volume on Single Family Homes of 3,198 units, Clark County continues to post the highest annual sales volume in the past 5 years. The combined 4 month SFR totals are near double last years 4 month volume of 5,353 units, and has surpassed even the total units of 10,107 reported for 2005.

For informational updates, such as this, sign up via email to Michael.Mitchell@fnf.com at your convenience.



*For All of Your Title and Escrow Needs, Please Contact Me.*

**Michael Mitchell**

Assistant Vice President - Business Development

Cell - (702) 296-0254 \*\*\* Fax - (702) 942-8193

EMAIL at: michael.mitchell@fnf.com

Visit our Website at: <http://www.FidelityLV.net>

